

Agency Overview

The College of Southern Idaho's mission, as a comprehensive community college, is to provide educational, social and cultural opportunities to the diverse population of South Central Idaho. Its service area is defined in the Idaho Code as the eight counties of the Magic and Wood River Valleys and a portion of Elmore County.

CSI offers its programs and classes at sites in Gooding (The Northside Center), Burley (The Mini-Cassia Center) and Hailey (The Blaine County Center) as well as the nearly 350 acre main campus in the center of Twin Falls. CSI's extensive proprietary microwave system delivers classes and programs to college students as well as high school students in dual enrollment. It is the fastest growing institution of higher education in the state.

As embodied in the Idaho Code, the College of Southern Idaho is governed by a five member Board of Trustees who manage the College through a total of 392 faculty, administrators and staff. Trustees are elected from within the College District comprised of Jerome and Twin Falls Counties. The 16 year average tenure of the Trustees has given continuity and stability to the College. In July of 2005, Dr. Jerry Beck succeeded Jerry Meyerhoeffer as only the third President in the College's forty year existence.

In the July 2005 letter of continuing accreditation for the College, the Northwest Commission on Colleges and Universities commended CSI's performance in several areas. Perhaps most notable are recognition of faculty, staff and administration "...for creating an environment of collegiality and learning"; and recognition "for creating a place where students are valued and respected." The College was recognized by the Twin Falls Chamber of Commerce as a community asset that is "the heart and soul" of the community.

The College of Southern Idaho provides support and leadership to economic development efforts in all of South Central Idaho. It was instrumental in recruiting and retaining firms that contribute to a 2.5% unemployment rate in the area. This last year, CSI actively led recruitment of: Hilex-Poly (Plastics); Jayco (RV trailers); Kiefer-Built (Trailers); Gossner Cheese; Mulholland Positioning Systems; Les Schwab (Tire manufacturer); and, Dutchmen Manufacturing (RV trailers).

CSI partners with industry, school districts and others including sister institutions of higher education. Probably more than any other industry, CSI has developed a relationship with health care providers in Magic Valley and the State of Idaho. The critical shortage of nurses and other health care professionals has prompted the College to expand its programs. Although the numbers of graduates in RN and PN classes have nearly doubled, there is still a waiting list for these programs. Other health science programs would be expanded with additional facility availability. In order to fully realize the potential of CSI's health science programs, it is necessary to add a Health Science Center to the campus in Twin Falls. The center will be housed in a new building for which the College seeks support from the Permanent Building Council and the Legislature. Creating such a center and moving programs from the present location will not only promote health science but allow the College and sister institutions to utilize the vacated space for the higher education programs that have been the substance of prior years' requests for a higher education building. This proposal would be tantamount yielding two square feet of space for one square foot of construction cost.

Core Functions/Idaho Code

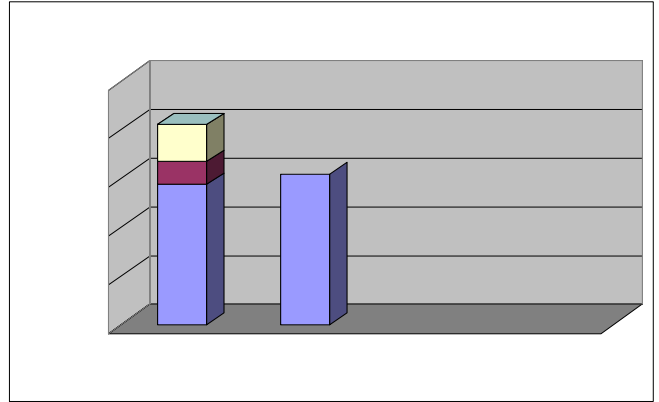
The College of Southern Idaho was established and is governed under Chapter 21 of Title 33, Idaho Code. While there is no formal divisional structure at the College, the primary functions may be categorized as: Instructional, Student Support, Financial support, Administrative and Community Relations.

Instructional:

The primary function of the College of Southern Idaho stated in the Idaho Code is "instruction in academic subjects, and in such nonacademic subjects as shall be authorized by its board of trustees". (33-2102 I.C.) Academic programs are submitted to the Idaho State Board of Education for approval. The State Board of Education acts under the authority granted in Article IX, Section 2 of the Idaho Constitution and Title 33, Chapter 1, I. C.) The College offers 71 academic programs and 82 professional technical programs.

Student Support:

Support for CSI students is delivered through departments (Advising, Records, Financial Aid, New Student Services, Multicultural Student Services, Student Disability Services) that assist students in seeking access to



Cases Managed and/or Key Services Provided	FY 2003	FY 2004	FY 2005	FY 2006
Departmental pursuit of minimum of one external discretionary grant annually	55% (18 of 33)			

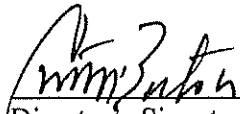
Part II – Performance Measures

Performance Measure	2003	2004	2005	2006	Benchmark
1. Average number of instructional sections – full time/part time	12.4/3.8	11.84/3.65	11.55/3.39	10.92/3.43	12/4
2. Average number of enrollments - full time/part time	240/53.6	228/53.78	227.71/51.17	221.30/50.51	240/54
3. Computer literacy pass rate	60.29%	78.6%	90.4%	93.0%	100%
4. Percentage of grants development supporting Strategic Plan	95%	84.85%	100%	100%	90%

Director Attestation for Agency Profile

In accordance with *Idaho Code 67-1904*, I certify the data provided in the Agency Profile has
accurate.

Department: PLANNING AND DEVELOPMENT



Director's Signature

July 19, 2006

Date

Please return to:

Division of Financial Management
Attn: Anita Hamann
700 West Jefferson
Boise, Idaho 83720-0032

FAX: 334-2438
E-mail: info@dfm.idaho.gov